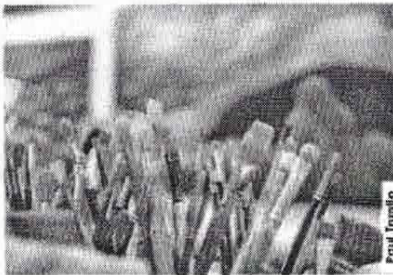


## Stow Artists to Showcase Work at ArtSpace

By Ann Needle

The works of several artists from Stow will be on display this coming weekend at ArtSpace-Maynard's Open Studios event, and everyone's invited. In fact, you will see some sophisticated work that gives the term "local art" a whole new meaning. Stow artist Judith Jaffe gave an exclusive preview of the art to be on display this coming Saturday and Sunday, October 6 and 7, from 12 p.m. to 5 p.m., at 63 Summer Street, Maynard.



Paul Tronilo

"It's amazing to me how many people don't know this exists — we have many award winners working here," Jaffe remarked as she conducted her tour of the viewing gallery and accompanying artists' studios.

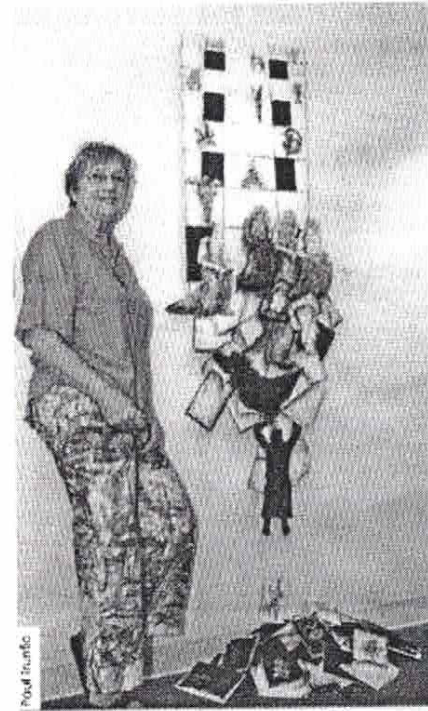
Expect to see the work of most of the following Stow artists at Open Studios this weekend —

\*Brenda Cirioni — Her striking hanging acrylic on paper in the gallery displays the phrase "May peace prevail on earth" in many languages.

\* Jen d'Entremont — This well-known activist for school and community causes gives Stow a chance to see her artistic side this weekend, with artwork entitled "Great Pond," which captures a peaceful lake in soft pastel. In a way, d'Entremont shows one of the many facets of ArtSpace, as someone who rented the studio with several other artistic friends as an outlet for her own talent, and has made good use of the time spent in the studios.

\* Cynthia Frost — Her portrait on exhibit is "Untitled," showing the beauty of an infants' supple skin and innocent gaze. "She does the most magical babies: It always becomes something more when you look at it," Jaffe observed.

\* Donnalisa Johnson — Johnson was at work in her studio during the preview, so she happily offered lots of insights into her art. While Johnson won't be exhibiting at Open Studios, she was completing a mural for the Acme Theater — which shares the converted Fowler Middle School building with ArtSpace — and was slated to go on public display in the Theater around October 20. Johnson explained that "their directive was to 'extend the audience,'" which it ably does. She also talked about her life-sized "fleece sculptures" of a man and woman that evidently preside over her studio space, each part of the work she has done with touchable art for the visually impaired.



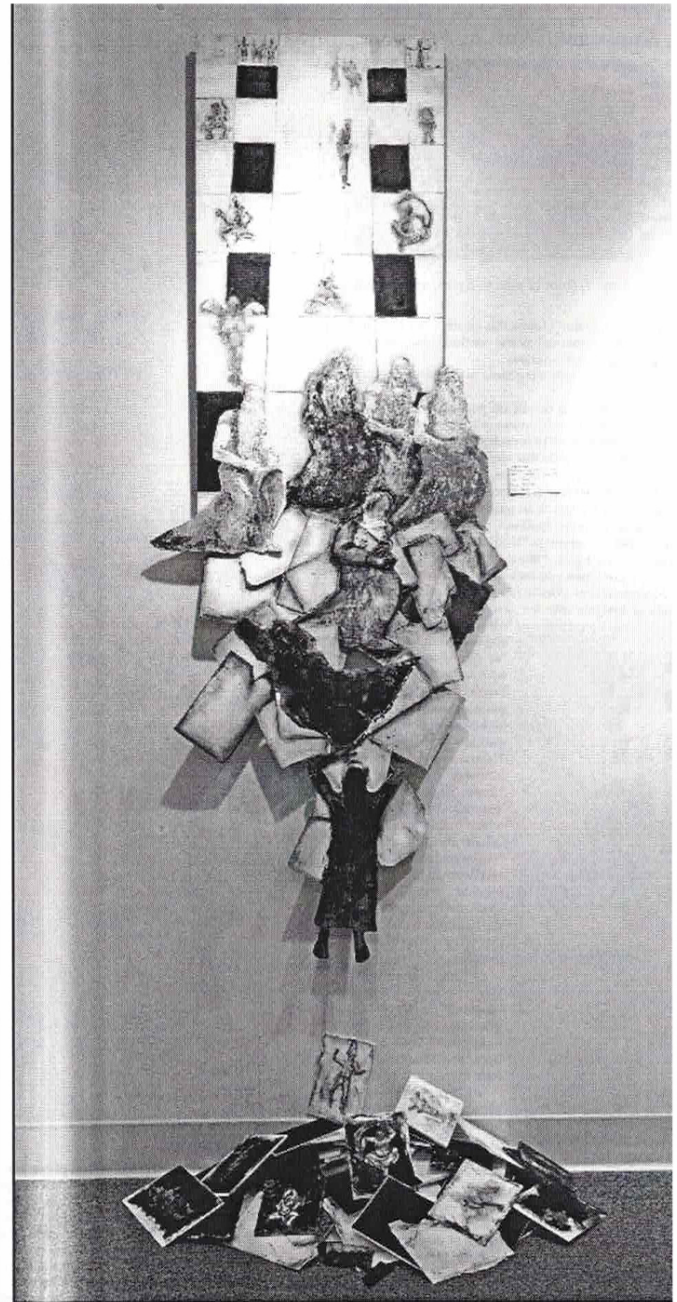
Paul Tronilo

Judith Jaffe with her work *IdolPlay*

humility. The latter is ironic, considering that her work on display this weekend — called *IdolPlay* — can only be called eye-popping. (While the accompanying photo gives you a notion of the work's drama, *IdolPlay* really is meant to be seen in person.) The black and white showpiece draws the eye to the center of the exhibit's main wall, and features pieces cascading out of the bottom of a display of "prophets and gods and things people believe in," said Jaffe. She explained that the work took "quite a long time," given that "sometimes you think you're done, and then you come in and have another idea." In this case,

\* Ernest Stonebraker — His "New Hampshire Morning" watercolor and graphite on paper highlights how soft morning light can illuminate ordinary objects in a room.

As for Jaffe, when asked about her background, she offhandedly remarked that "I always was an artist," in a way that mixed pride with



the ideas added up quite well.

The rest of the exhibit offers up lots of examples of artistic talent in the area, from sculptures to watercolors to jewelry. Many pieces are for sale at prices that compare quite well with those charged by galleries elsewhere — for example, most of the costume jewelry on display can be bought for under \$50.

Stopping by ArtSpace-Maynard this Saturday also puts you around the corner from Maynard Fest, a street fair put on by Maynard vendors and restaurants in the town center that makes for a great take on a holiday weekend. Come to ArtSpace on Sunday and you can enjoy a free concert at 5p.m. by classical guitarist Berit Strong. For more information, look up ArtSpace at [artspacemaynard.com](http://artspacemaynard.com).